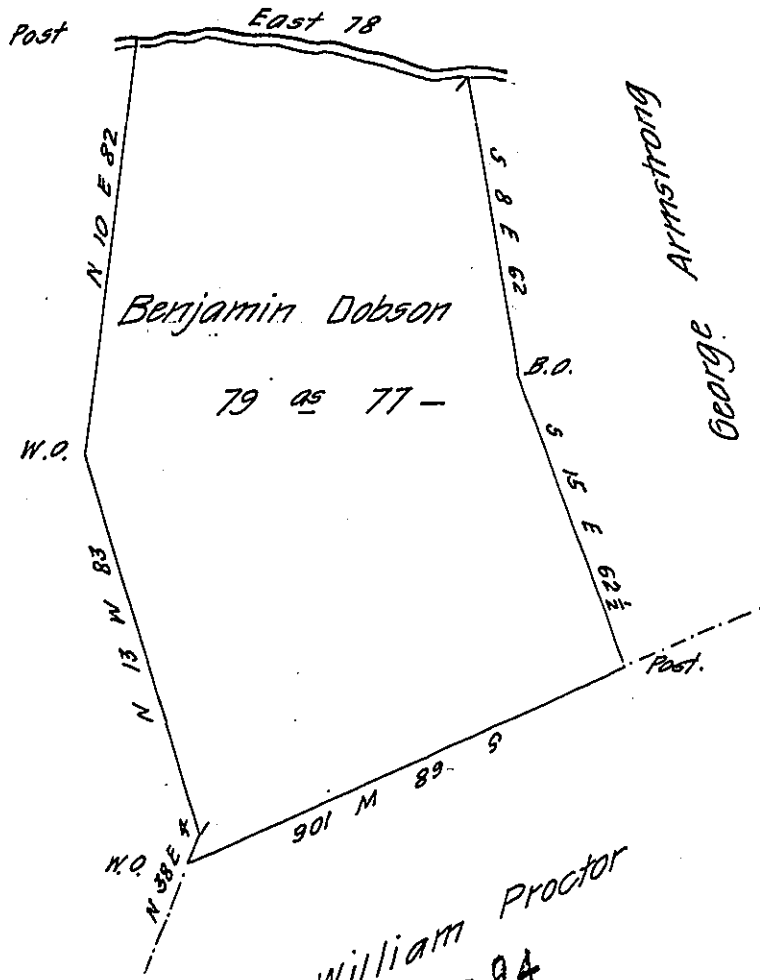


Edward Ward

C-116-236

Robert Erven



A draft of a tract of land situate on the South Side of Brushy Run & joining the same about 4 miles North from Bedford - in the Township & County of Bedford - Containing Seventy nine Acres & seventy seven perches - and allowance of six per cent for roads &c. Surveyed for Benjamin Dobson the 22<sup>sd</sup>. day of January 1822 on order No 3651 dated the 8<sup>th</sup> day of May 1767

James O Connor D.S.

To Gabriel Heister Esq<sup>r</sup>

S. G.

IN TESTIMONY that the above is a copy of the original remaining on file in the Department of Internal Affairs of Pennsylvania, made conformably to an Act of Assembly approved the 16th day of February, 1833, I have hereunto set my Hand and caused the Seal of said Department to be affixed at Harrisburg, this twenty first day of August 1908

*Henry Howell*

Secretary of Internal Affairs.